



HS-E81 Cloud Series Receipt&Label Printer Datasheet

Function

- ◆ Support 80MM large diameter roll;
- ◆ Using 100M Ethernet card, connect printer faster;
- ◆ Support LOGO Graphical download and print;
- ◆ Support 1D,2D bar code printing;
- ◆ Support Multi language printing
- ◆ interface: USB+LAN+Bluetooth+WIFI
- ◆ Compatible with ESC/POS, TSPL,CPCL commands
- ◆ Support OPOS Drivers
- ◆ Support MQTT protocol and web socket Protocols
- ◆ With Voice broadcast can be customized.
- ◆ Support windows, Linux, Mac drivers Printing
- ◆ Built in DHCP Servers, can get the ip address automatically
- ◆ Support Multiple developing language, Java, C++,C#, JS etc, easy to SDK.



Application



Supermarket



Catering



Store



Tax



Bank



Medical care



Storage



Post

Interface

Model	Interface	Remark
HS-E81ULW	USB+Lan+WIFI+Bluetooth	With MQTT protocol
HS-E81UAI	USB+BLUETOOTH	



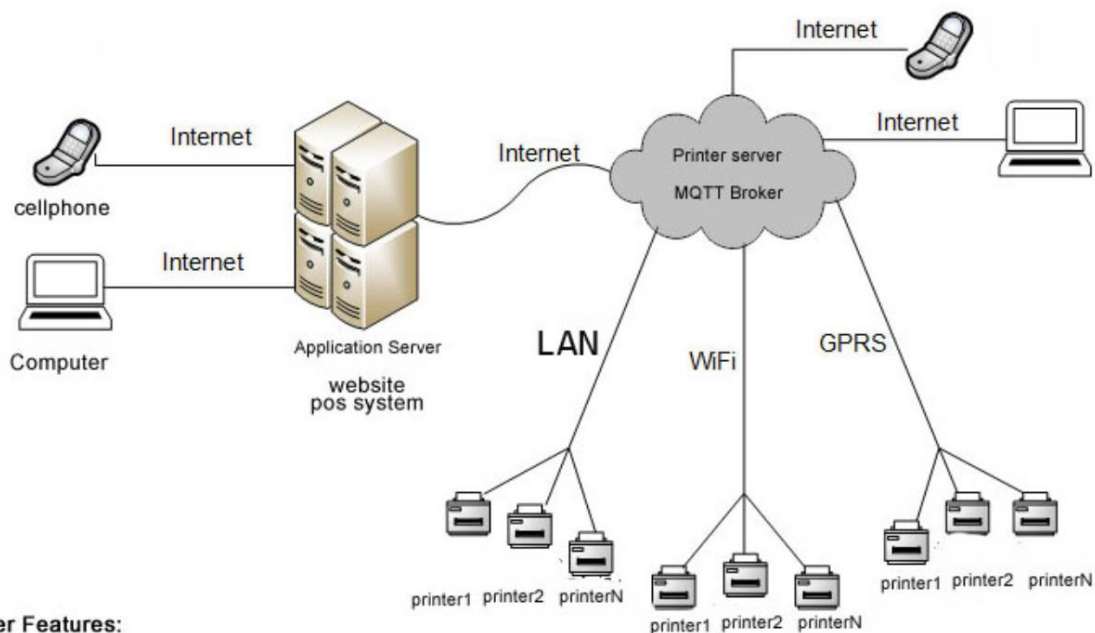
Standard Accessory

1* Power Adapter
1*USB Data Cable
1*Test Paper Rolls
1*Power Cable

Package info:

One set size :240*201*160mm
6set/carton
one set weith:1.6kg
carton size:65*46*20cm/carton
Carton weight:12.7kg

MQTT Cloud Pirinting Maps



Cloud Printer Features:

- 1, avoid the lost the order When Print the receipt.
- 2,use the MQTT Protocol
- 3,Safe and reliable and support Encrypted transmission

HSPOS TECHNOLOGY LIMITED
F5,A1 building,Nanshui Industrial Park,Sanjiao
Town,Zhongshan City,GuangDong Province,China
Tel+86 0760-85402097 **Fax**+86 0760-85402097
Website:www.hsprinter.com
Email:info@hsprinter.com



Parameters

Printing method	Direct thermal
Print width	72mm
Column capacity	576 dots/line 512 dots/line
Printing speed	50-90mm/s
Interface	USB/ LAN/ Bluetooth/WIFI/4G
Printing paper	79.5±0.5mm×φ80mm
Line spacing	3.75mm (Adjustable by commands)
Column number	80mm paper: Font A - 42 columns or 48 columns/Font B - 56 columns or 64 columns/ Chinese,traditional Chinese - 21 columns or 24 columns
Character size	ANK, Font A: 1.5×3.0mm (12×24 dots) Font B: 1.1×2.1mm (9×17 dots) Chinese,traditional Chinese:3.0×3.0mm (24×24 dots) Support TTF fromat font
command	ESC POS/TSPL/CPCL
Barcode Character	
Barcode types	UPC-A/UPC-E/JAN13/JAN8CODE39/ITF25 /CODABAR/CODE93/CODE128/POSTAL/ PLESSEY/MSI/GS1 QRCode/PDF417/DATAMATRIX/AZTEC /MAXICODE/GS1 (optional)
2D code	QR Code
Buffer	
detection	Temperature detection, paper detection, printer head detection
Power	
Power adaptor	Input: AC 110V/220V, 50~60Hz
Power source	Output: DC 8.5V/3A
Physical characteristics	
Weight	1.60KG
Dimensions	187mm*135mm*128mm (D×W×H)
Environmental Requirements	
Work environment	Temperature (0~45) humidity(10~80%)
Storage environment	Emperature(-10~60℃) humidity(10~80%)
Reliability	
Printer head life	100KM